

WATCHPAX 20

WATCHPAX 20 is a pocket-size, two-channel media server optimized for performance with Dataton WATCHOUT multi-display software. WATCHPAX 20 has a WATCHOUT license pre-installed.



The WATCHPAX 20 media server is tuned and tweaked for use in WATCHOUT shows. It has two Mini DisplayPort outputs and supports 4K (UHD) playback. Multiple units can be installed together, or mixed with Dataton's other media servers WATCHMAX or WATCHPAX 4.

With its extremely compact footprint and robust aluminum casing, WATCHPAX 20 is easy to transport. The unit also has a stylish exterior, VESA hole pattern for wall-mounting, and Kensington MiniSaver security slot which means the unit can be installed close to displays and in public areas.

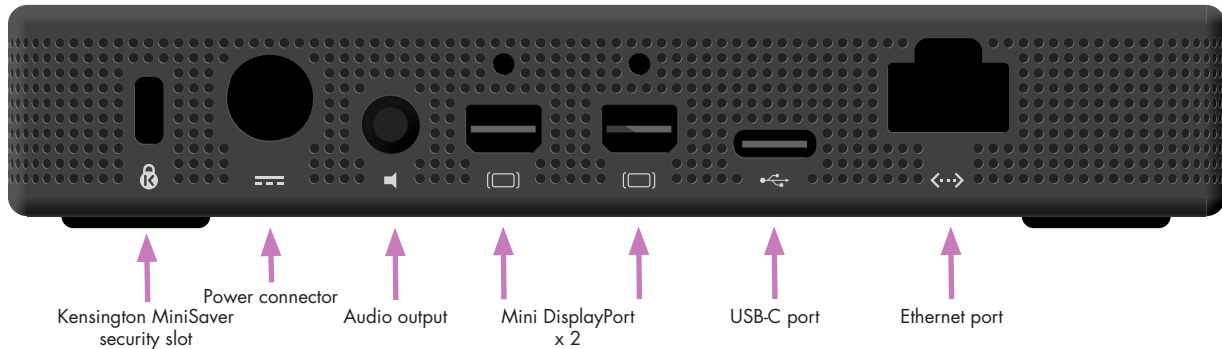
Important: The production computer in your rig must have WATCHOUT 6.2.2, or later, installed.

Features

- » Media server for use in Dataton WATCHOUT multi-display rigs
- » Built-in WATCHOUT license
- » Performance-optimized spec
- » Up to 2 x 4K (UHD) playback support. **NOTE:** Video playback depends on video quality, encoding, frame rates and number of effects added; 2 x 4K playback is possible with HAP in 25fps (without tweens or geometry correction).
- » Plug-and-play
- » Shipped with external power supply
- » Use multiple units in same setup
- » Compact footprint
- » Two-year warranty
- » Windows Embedded
- » 256 Gigabyte storage
- » 2 x Mini DisplayPort outputs
- » 3.5 mm stereo audio out
- » Gigabit Ethernet connector
- » USB-C port (compatible USB 3.0)

Appearance

- » Aluminium housing, matt finish
- » Width 127 mm, height 127 mm, depth 23 mm (5 x 5 x 0.9 inches)
- » Weight: 450 g (1 lb)
- » VESA hole pattern for easy mount
- » Kensington MiniSaver security slot



Power

- » Input voltage: 85 to 264 VAC, 50 to 60 Hz
- » Power consumption: Max 50W

Ventilation

The air intake is at the front of the unit with discharge at the back (where connectors are located). This enables stacking of units.

Important: Keep front and back of a unit free of obstruction/cover at all times.

Environmental

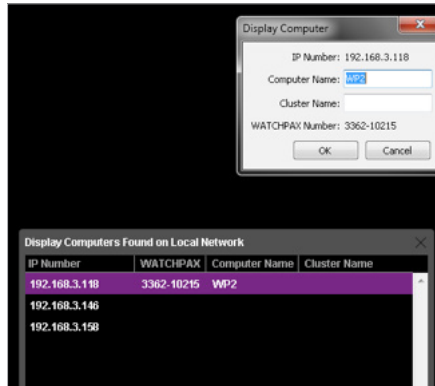
- » Operating temperature: 0 to +40C
- » Storage & transport temperature: -40 to +60C
- » Relative humidity 10 to 90% (non-condensing)
- » Operating altitude max 2000 MASL

Getting started

- » 1 Connect displays to WATCHPAX
- » 2 Connect network to WATCHPAX
- » 3 Connect power to WATCHPAX

Start WATCHOUT on the production computer (version 6.2.2 or higher). The WATCHPAX and any WATCHOUT display computers on the local network will be listed in: *Window > Network*.

You can assign display and cluster names by double-clicking an item in the list, see screenshot.



IP number assignment

WATCHPAX automatically retrieves an IP address via a DHCP server. If no DHCP server is available, the WATCHPAX will get a self-assigned IP address in the range 169.254.x.y. If you are using a control system, you may want to use a fixed IP address for WATCHPAX. Assign a fixed IP through the WATCHOUT protocol command "setIP" in the Startup Script as shown below:

```
authenticate 2  
setIP 192.168.0.32
```

Make sure you choose an IP address in the correct subnet range. To remove the fixed IP number, use the same command but with an empty string parameter, as below:

```
authenticate 2  
setIP
```

For more information, see the section on "Auto Start".

Resolution

Double-click the display in the Stage window and set the native resolution of your screen or projector, see screenshot.



Auto start

A WATCHOUT production computer has to be connected when you compose or create your show. Once that's done, you can replace the production computer with an external control system, or auto start the WATCHPAX by using the built-in Startup Script.

Hint: Use *Edit Startup Script* in WATCHOUT to define initial WATCHPAX settings. This lets you load shows and perform other WATCHOUT protocol commands. For more information, please see the WATCHOUT User's Guide, Command Line Options, "Display Software".

Delete files

To remove unused files from the unit:
Stage > Manage Display Computer > Delete Other Shows

This deletes files from online display computers for all shows, with the exception of the current (open) show.
Stage > Manage Display Computer > Re-build Show Cache

This removes and rebuilds all cached data associated with the current (open) show. Note that the cache is usually managed automatically by WATCHOUT, but in some rare cases you may want to force it to rebuild.

Active or passive adapters

Both active and passive DisplayPort adapters to DVI/HDMI can be used with WATCHPAX.

Use a passive adapter if you can guarantee continuous power-on for the projector/display or know it is already powered up when you connect the WATCHPAX. Use an active adapter if it is a risk that the projector/display will shut down while connected to a powered WATCHPAX.

EDID managers

If there is not a stable connection to a projector/display or risk of sudden disconnection, add an external EDID manager to all outputs. This ensures WATCHPAX always sees a correct display load regardless of display state.