

WATCHPAX

WATCHPAX is a compact solid-state media player optimized for best performance with Dataton WATCHOUT multi-display production software. WATCHPAX features built-in WATCHOUT software and license.

WATCHPAX gives you the power of WATCHOUT production tools without the hassle of fine-tuning computers or running long video cables. Create your show in WATCHOUT, and connect WATCHPAX. Add more units as you grow your show, from a single WATCHPAX and display to multiple units and display sources.

WATCHPAX is designed to match the demands of distributed systems and multi-room installs, offering full audio and video capabilities on a standard ethernet network. In installations running in several show areas or rooms, it keeps the hardware close to the display source.



General

- » WATCHOUT pre-installed
- » Field upgrades
- » Includes WATCHOUT license
- » Audio sync with WIRETAG
- » Hardware accelerated video playback (H.264)
- » Zero configuration
- » Clean shut-down and power-up
- » Dimensions: 127 x 148 x 22 mm
- » Two-year warranty
- » Line voltage 100 - 240 V
- » Windows 7

Specifications

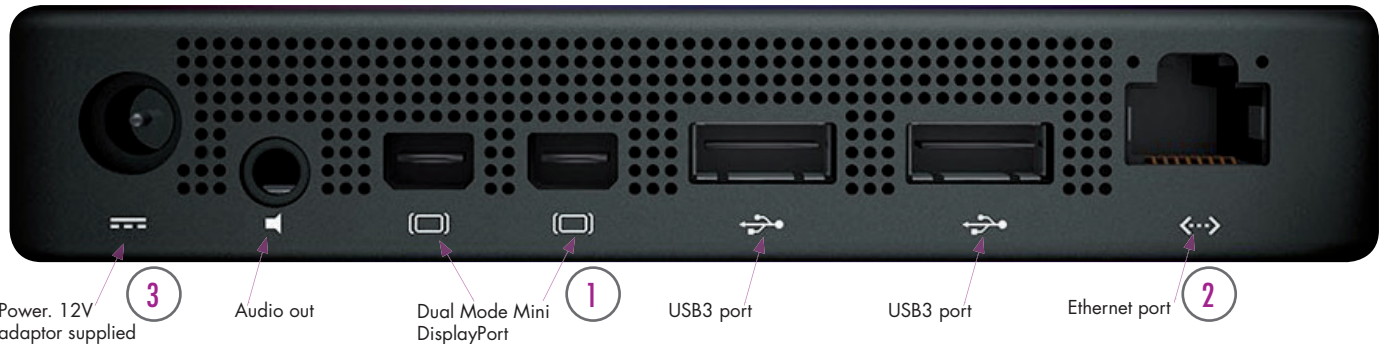
- » Approx. 20W power consumption at full operation
- » Active cooling
- » SSD (Solid State Disk), 64 GB
- » Dual Mode Mini DisplayPort version 1.2. Resolutions up to 2560 x 1600 (WQXGA) per output
- » Processor: AMD G series GX 420CA, 2.0 GHz Quadcore
- » RAM: 4 GB
- » 3.5 mm stereo audio out
- » Two USB3 ports
- » Gigabit Ethernet – Optional WiFi

External WATCHOUT features

- » Network video and Dynamic Image Server
- » Control and interactivity via MIDI (USB), DMX (via ArtNet), TCP/IP
- » DMX output (via ArtNet)

IMPORTANT

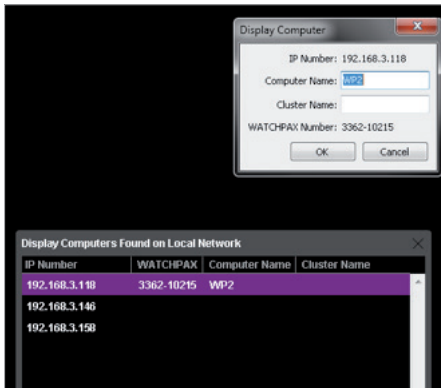
Install WATCHOUT version 5.5 or higher on the production computer before you connect the WATCHPAX.
www.dataton.com/downloads



Getting started

- » 1 Connect the display
- » 2 Connect the network
- » 3 Connect to power
(use adapter supplied)

Start WATCHOUT on the production computer (version 5.5 or higher). The WATCHPAX and any WATCHOUT display computers on the local network will be listed in *Window > Network*. You can assign display and cluster names by double-clicking an item in the list, see screenshot.



IP number assignment

WATCHPAX automatically retrieves an IP address via a DHCP server. If no DHCP server is available, the WATCHPAX will get a self-assigned IP address in the range 169.254.x.y

If you are using a control system, you may want to use a fixed IP address for WATCHPAX. Assign a fixed IP through the WATCHOUT protocol command "setIP" in the Startup Script as shown below:

```
authenticate 2  
setIP 192.168.0.32
```

Make sure you choose an IP address in the correct subnet range. To remove the fixed IP number, use the same command but with an empty string parameter, as below:

```
authenticate 2  
setIP
```

For more information, see the section on "Auto Start" on page 4.

Resolution

Double-click the display in the Stage window and set the native resolution of your screen or projector, see screenshot.

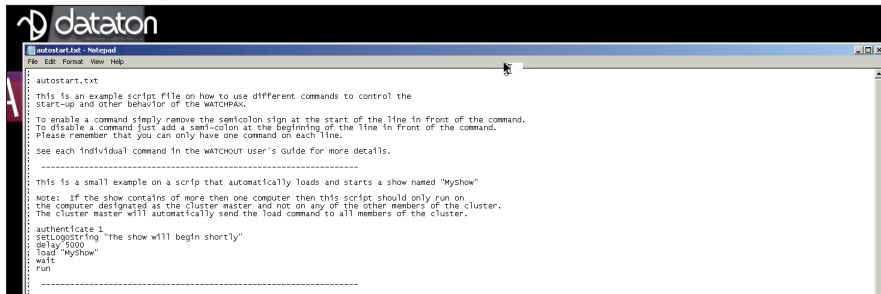


Note: If you want to use WATCHPAX without a display, e.g., as a sound server, set a "dummy" resolution of 640x480 pixels in WATCHOUT. In that case you need to use an active MiniDisplayPort adapter to DVI/VGA/HDMI to ensure that the correct EDID information is transferred to WATCHPAX.

Auto start

A WATCHOUT production computer has to be connected when you compose or create your show. Once that's done, you can replace the production computer with an external control system, or auto start the WATCHPAX by using the built-in Startup Script.

Hint: Use *Edit Startup Script* in WATCHOUT to define initial WATCHPAX settings. This lets you load shows and perform other WATCHOUT protocol commands. For more information, please see the WATCHOUT User's Guide, Command Line Options, "Display Software".



```
autostart.txt
-----
This is an example script file on how to use different commands to control the
start-up and other behavior of the WATCHPAX.

To enable a command simply remove the semicolon sign at the start of the line in front of the command.
To disable a command just add a semi-colon at the beginning of the line in front of the command.
Please remember that you can only have one command on each line.
See each individual command in the WATCHOUT user's guide for more details.

-----
This is a small example on a scrip that automatically loads and starts a show named "myshow"
Note: If the show contains of more then one computer then this script should only run on
the computer designated as the cluster master and not on any of the other members of the cluster.
The cluster master will automatically send the load command to all members of the cluster.

authenticate 1
setlogging "the show will begin shortly"
delay 5000
load "myshow"
wait
run
-----
```

Stage > Manage Display Computer > Remote Access > File > Edit Startup Script

Delete files

To remove unused files from the WATCHPAX:

Stage > Manage Display Computer
> Delete Other Shows

This deletes files from online display computers for all shows, with the exception of the current (open) show.

Stage > Manage Display Computer
> Re-build Show Cache

This removes and rebuilds all cached data associated with the current (open) show. Note that the cache is usually managed automatically by WATCHOUT, but in some rare cases you may want to force it to rebuild.

Active or passive adapters

Both active and passive MiniDisplay-Port adapters to DVI/VGA/HDMI can be used with WATCHPAX.

Use a passive adapter if you can guarantee continuous power-on for the projector/display or know the projector/display will already be powered up when you connect and power up the WATCHPAX. If that is not the case, or if there is a risk that the projector/display might shut down while connected to a powered WATCHPAX, use an active adaptor.

EDID managers

If you do not have a stable connection to a projector/display or there is a risk of sudden disconnection, add an external EDID manager to all outputs. This ensures WATCHPAX will always see a correct display load regardless of display state.

Measurements in mm

